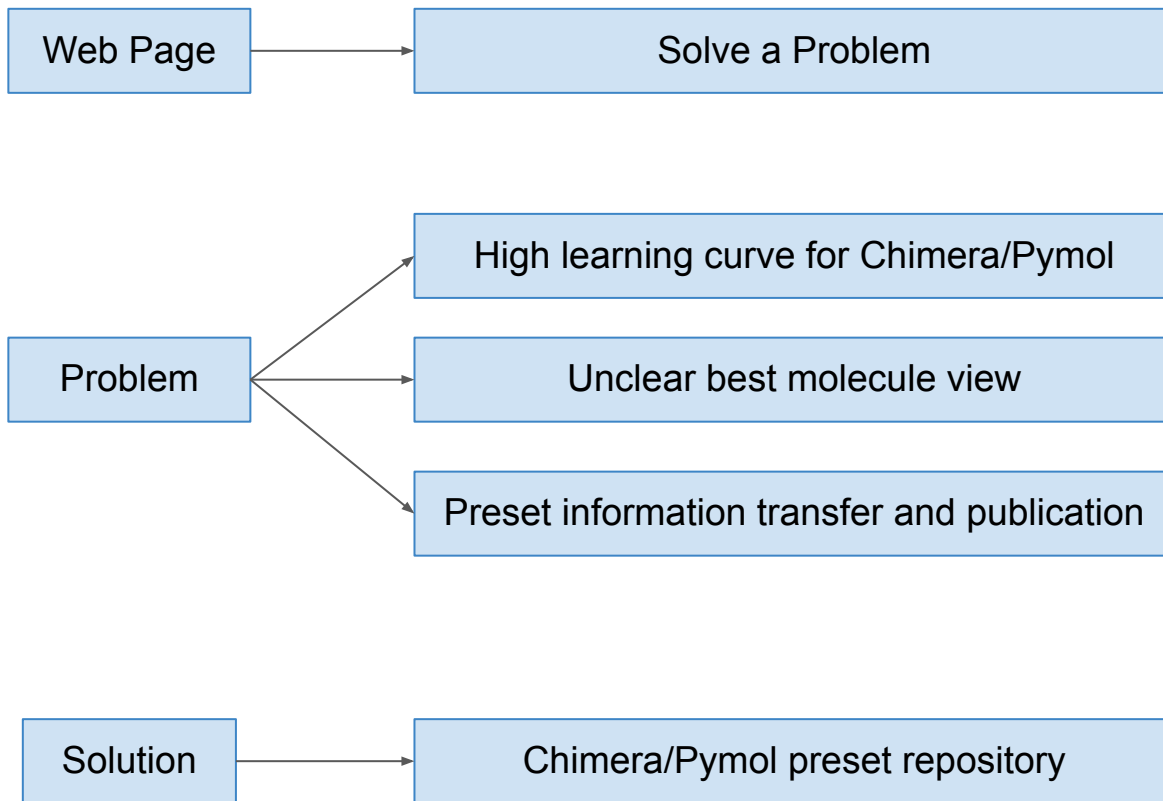
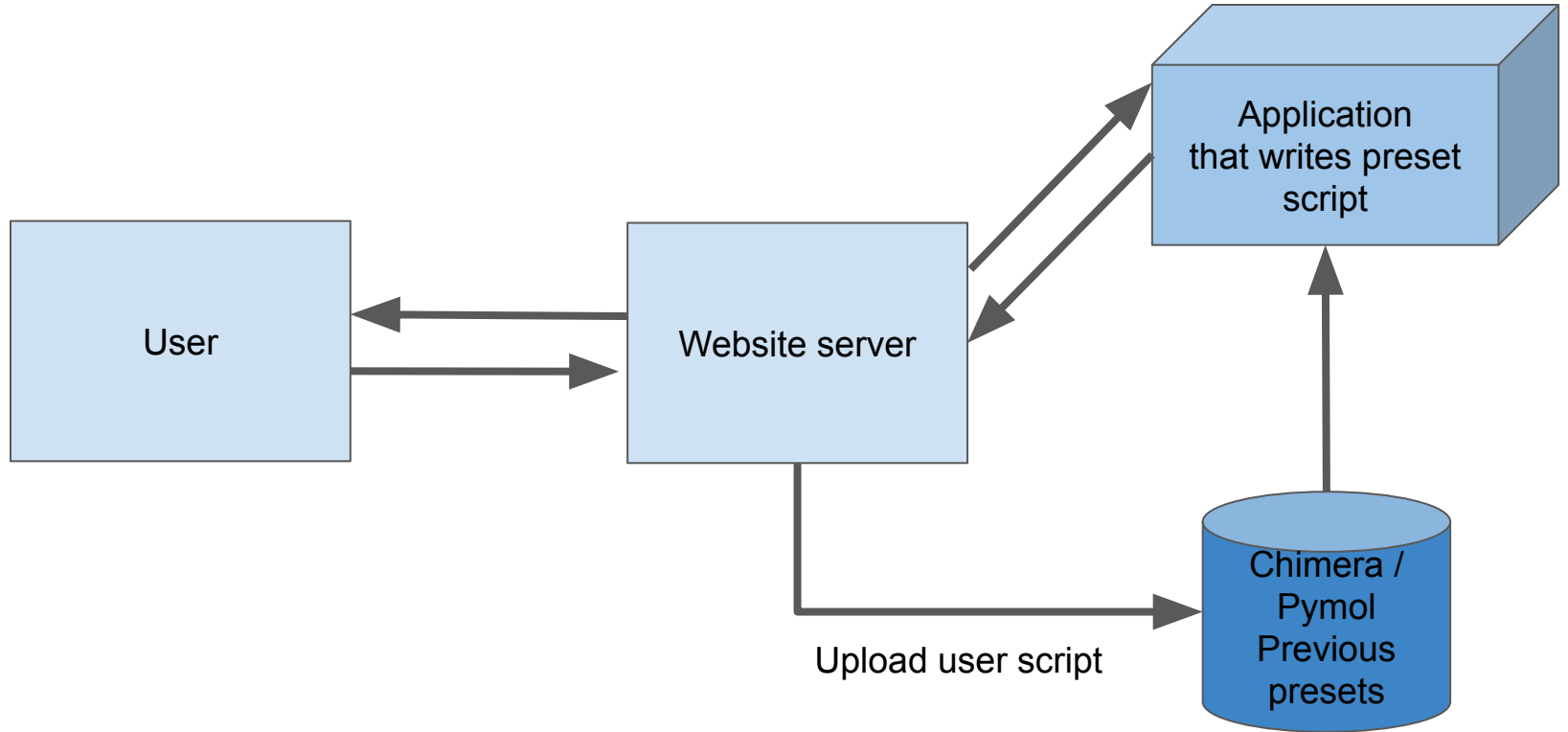


# Our web application



# Application scheme



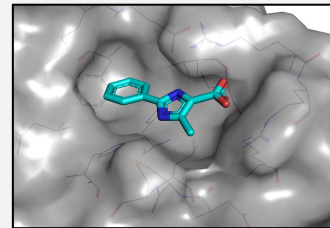
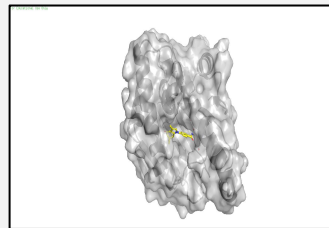
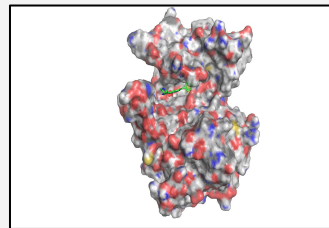
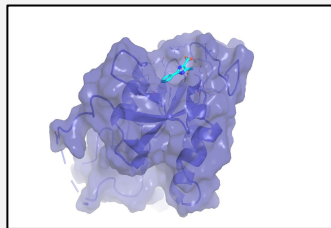
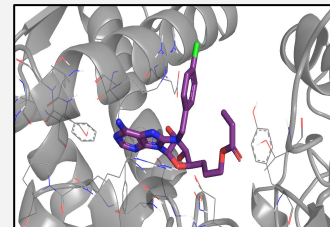
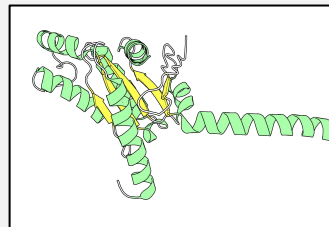
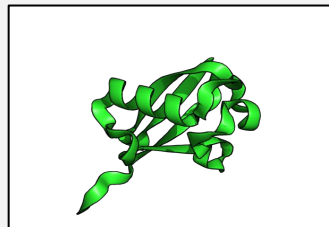
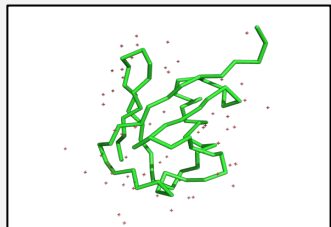
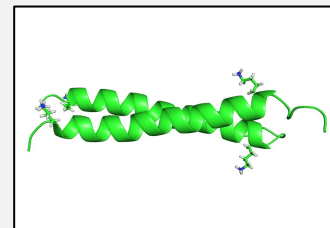
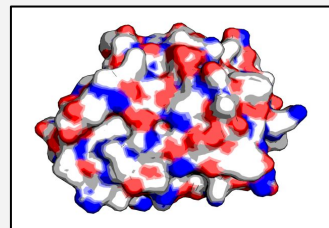
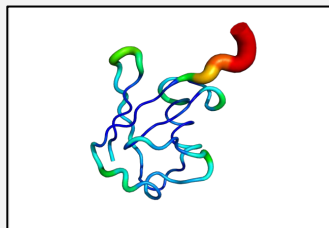
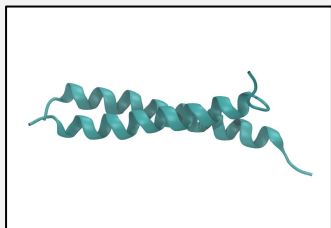
# Molecule Visualizator script database

## Program

- Chimera
- PyMOL

## Type

- All
- Protein
- DNA
- Small molecule

[Upload your own script](#)[FAQs](#)[Further documentation](#)[About](#)

Log in

# Molecule Visualizator script database

## Program

- Chimera
- PyMOL

## Type

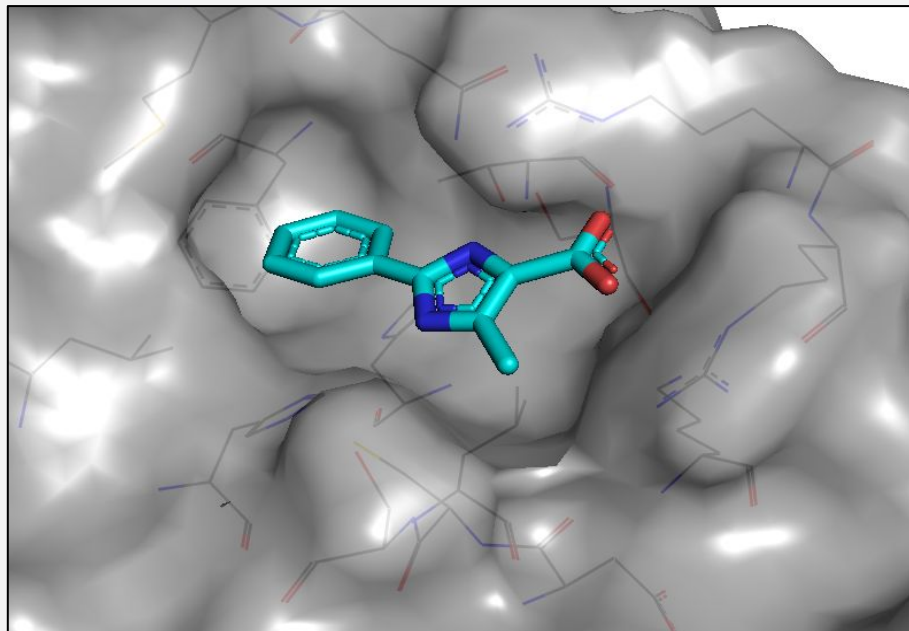
- All
- Protein
- DNA
- Small molecule

Upload your own script

FAQs

Further documentation

About



Protein ID

Surface trans.

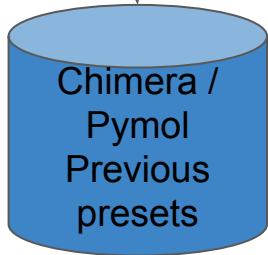
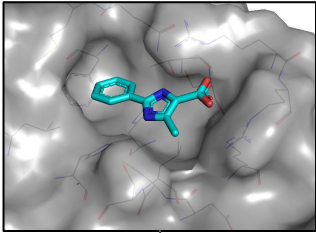
Color protein

Color ligand

BG color

Generate .pml preset

# Database



```
show cartoon,  
show wire, backbone  
color yellow, chain A...  
set ray_trace_mode, 2 #black outline only, 1 #normal  
colour + black, 3 comic colours + black.  
bg_color, (0,0,250)  
set ray_trace_gin, 0.005 #default 1  
set ray_trace_colour, magenta  
set ray_shadows, 1 #turn on shadows.  
set ambient_light, 0.5  
set cartoon_transparency, 2  
set field_of_view, 70  
set cartoon_discrete_colours, on  
set bg_rgb=[1,1,1] #background white  
space cmyk #color scheme  
set arthroscopic, on  
set depth_cue=0  
set ray_trace_fog = 0  
set cartoon_highlight_color, grey75  
set antialias, 4
```

# Backup examples

- Gene analysis: Retrieval of basic information and calculations (such as BLAST, T-COFFEE)
- Search engine for binding affinity data in several databases (MOAD, PDBbind, BindingPDB...) and return of ordered and cleaned results (duplicates...)